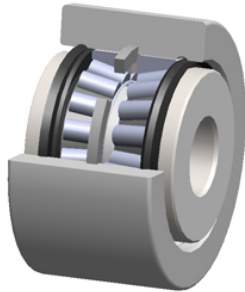




Ciurxk Bearings Research & Solutions ...



closure type: PCI Procal Inc. PTRY-6.00
Crowned & Flat Yoke Rollers

Bearing No. PTRY-6.00

roller diameter:	6.0000 in
operating temperature range:	-30 ° F to 225 ° F
roller width:	3.2500 in
radial dynamic load capacity:	35830 lb
d	2.2500 in
radial static load capacity:	56200 lb
roller shape:	Flat
roller material:	Chrome Steel
bearing element:	Tapered Rollers
technical specifications:	Click here
closure type:	Sealed

PTRY-6.00 Bearing 2D drawings and 3D CAD models